

Pre-Visit Guide: *Interior Lives & Darrel Ellis: Regeneration*

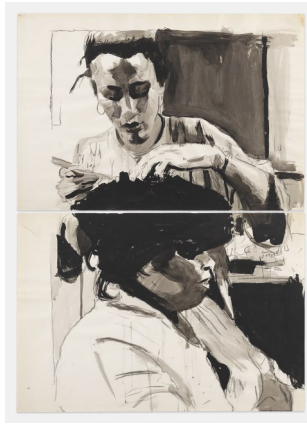
Big Ideas & Major Themes (Elementary)

Here are some relevant topics to review with your students before experiencing these exhibitions.

- American life changed dramatically from the 1890s to 1945, and art can show examples of new technology, changing ideas, and innovative ways to make and think about art.
- Portraits can show us the way a person looked, but also reveal something about their personality and emotions.
- Art can be a way to express feelings, and for some artists, like Darrel Ellis, to learn about their own family history.



Malcolm Parcell. *Portrait of Helen Gallagher*. c. 1928. Oil on canvas. Westmoreland Museum of American Art.



Darrel Ellis. *Untitled (Katrina Styling Susan's Hair)*. 1985–88. © Darrel Ellis Estate.

SC Standards Addressed

Visual Art CR.AL.1; R.IL.5.1; R.IM.5.1; R.AL.5.2; R.AM.5.2; C.AM.6; C.AH.7.1

HG.1.2.PR. HG.4.1.HS, HG.5.1PR, HG.5.2.PR; MWH.1.1.CO, MWH. 4.1.CE, MWH.1.E, WH.2.E; EPF.1.ER, EPF.3.1N; OT.1.3, OT.1.4, OT.3.1, OT.3.2, OT.3.3, OT.3.4; NT.1.3, NT.2.6, NT.3.1, NT.3.3, NT.3.4

Social Studies K.H.1, K.E.1, K.E.3, K.CG.1; 1.H.3, 1.CG.1, 1.H.3, 1.G.3; 1.CG.1, 2.CG.1; 3.4.1 PR

In the Classroom

Prepare students for your visit with one or more of these activities.

- Look at photographs from 1910-1940 (see LOC links below). Have students identify elements that are familiar and those that aren't. Discuss how similar items (e.g. cars, telephones) have changed since.
- Ask students to bring in old family photos and make photocopies. Discuss them in groups or as a whole, asking students to notice elements they see in their peers' images and ask questions. As an extension, have students add elements to the copied photos—adding color, shapes, or lines to emphasize certain parts.

Resources

Review these references to learn and share with your students.

- Library of Congress image sets https://www.flickr.com/photos/library_of_congress/albums/72157603624867509/ & https://www.flickr.com/photos/library_of_congress/albums/72157603671370361/with/2178246585
- Darrel Ellis: Regeneration <https://mam.org/exhibitions/darrel-ellis/#artworks>

Museum Manners

School tours are limited to 80 students per visit. Contact the CMA to see whether your group is better suited for an in-person or virtual experience. Please review these guidelines with your students before your tour.

- Touching can permanently damage works of art. Please don't touch the art or lean on the walls.
- Food, drinks, gum, pens, and large bags are not permitted in the galleries.
- Watch where you walk! Try to stay at least arms-length from works of art.
- Groups interested in sketching should consult the sketching guidelines located on the CMA's [Visit page](#).

Questions? Contact us at 803-343-2163 or email tours@columbiamuseum.org

columbiamuseum.org/learn

the Columbia Museum of ART